

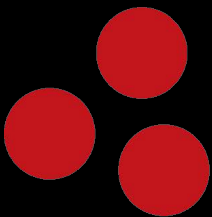
UPS USER MANUAL

F-17

OLINE DOUBLE CONVERSION UPS

RACK MOUNTABLE UPS

1000VA



ION

Table of Contents

1. Important Safety Warning	1
1-1. Transportation	1
1-2. Preparation	1
1-3. Installation	1
1-4. Operation	1
1-5. Maintenance, service and faults	1
2. Installation and setup	3
2-1. Rear panel view	3
2-2. Setup the UPS	3
3. Operations	6
3-1. Button operation	6
3-2. LED Panel	6
4. Troubleshooting	8
5. Storage and Maintenance	9
6. Specifications	10

1. Important Safety Warning

Please comply with all warnings and operating instructions in this manual strictly. Save this manual properly and read carefully the following instructions before installing the unit. Do not operate this unit before reading through all safety information and operating instructions carefully.

1-1. Transportation

- Please transport the UPS system only in the original package to protect against shock and impact.

1-2. Preparation

- Condensation may occur if the UPS system is moved directly from cold to warm environment. The UPS system must be absolutely dry before being installed. Please allow at least two hours for the UPS system to acclimate the environment.
- Do not install the UPS system near water or in moist environments.
- Do not install the UPS system where it would be exposed to direct sunlight or near heater.
- Do not block ventilation holes in the UPS housing.

1-3. Installation

- Do not connect appliances or devices which would overload the UPS system (e.g. laser printers) to the UPS output sockets.
- Place cables in such a way that no one can step on or trip over them.
- Do not connect domestic appliances such as hair dryers to UPS output sockets.
- The UPS can be operated by any individuals with no previous experience.
- Connect the UPS system only to an earthed shockproof outlet which must be easily accessible and close to the UPS system.
- When installing the equipment, it should ensure that the sum of the leakage current of the UPS and the connected devices does not exceed 3.5mA.

1-4. Operation

- Do not disconnect the mains cable on the UPS system or the building wiring outlet (shockproof socket outlet) during operations since this would cancel the protective earthing of the UPS system and of all connected loads.
- The UPS system features its own internal current source (batteries). The UPS output sockets or output terminals block may be electrically live even if the UPS system is not connected to the building wiring outlet.
- Prevent no fluids or other foreign objects from inside of the UPS system.

1-5. Maintenance, service and faults

- The UPS system operates with hazardous voltages. Repairs may be carried out only by qualified maintenance personnel.
- **Caution** -risk of electric shock. Even after the unit is disconnected from the mains (building wiring outlet), components inside the UPS system are still connected to the battery and electrically live and dangerous.
- Before carrying out any kind of service or maintenance, disconnect the batteries and verify that no current is present and no hazardous voltage exists in the terminals of high capability capacitor such as BUS-capacitors.

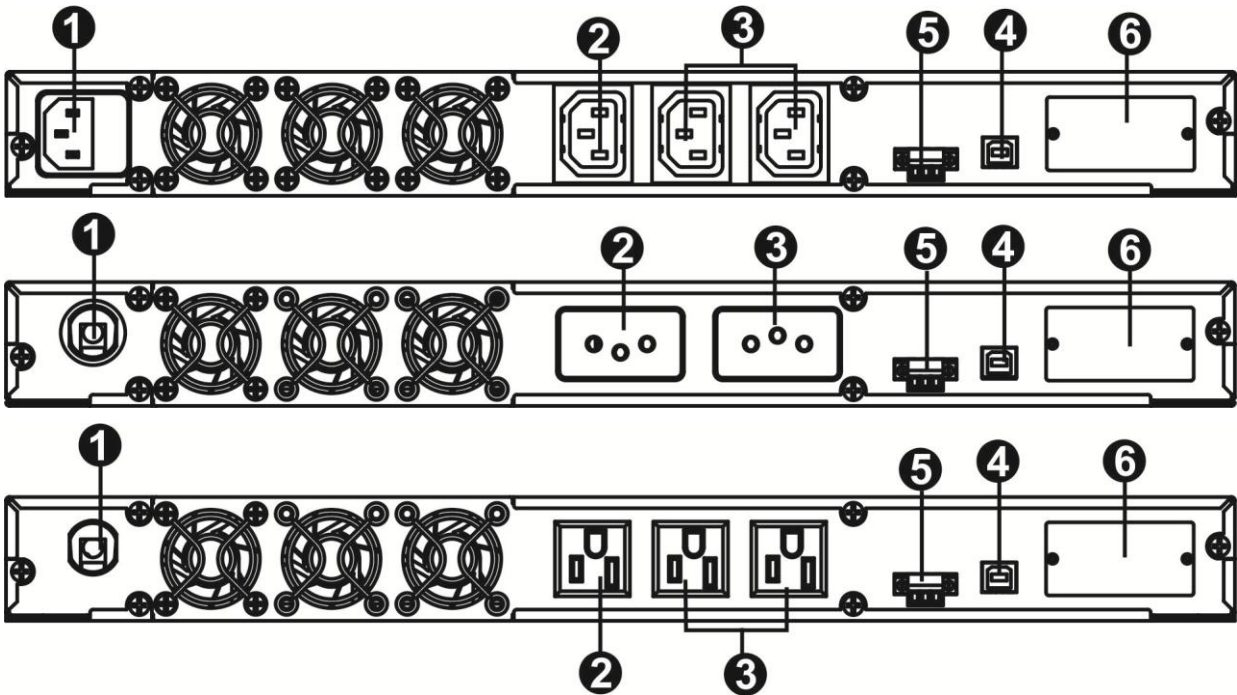
- Only persons are adequately familiar with batteries and with the required precautionary measures may replace batteries and supervise operations. Unauthorized persons must be kept well away from the batteries.
- **Caution** -risk of electric shock. The battery circuit is not isolated from the input voltage. Hazardous voltages may occur between the battery terminals and the ground. Before touching, please verify that no voltage is present!
- Batteries may cause electric shock and have a high short-circuit current. Please take the precautionary measures specified below and any other measures necessary when working with batteries:
 - remove wristwatches, rings and other metal objects
 - use only tools with insulated grips and handles.
- When changing batteries, install the same number and same type of batteries.
- Do not attempt to dispose of batteries by burning them. This could cause battery explosion.
- Do not open or destroy batteries. Escaping electrolyte can cause injury to the skin and eyes. It may be toxic.
- Please replace the fuse only with the same type and amperage in order to avoid fire hazards.
- Do not dismantle the UPS system.

2. Installation and setup

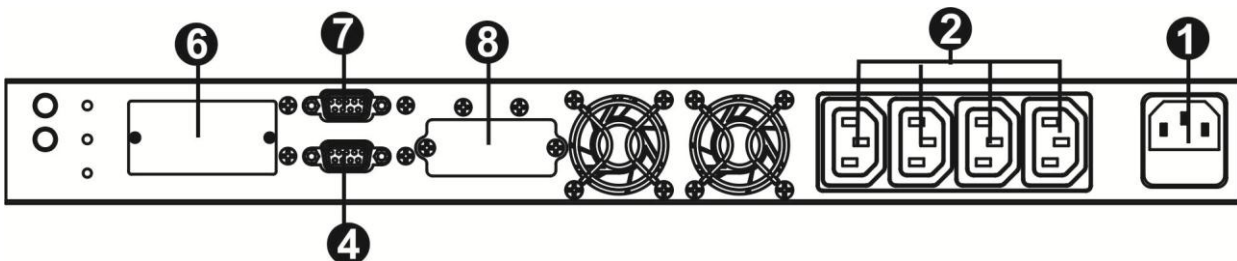
NOTE: Before installation, please inspect the unit. Be sure that nothing inside the package is damaged. Please keep the original package in a safe place for future use.

2-1. Rear panel view

1K



1KL



- 1 AC input
- 2 Output receptacle: connect to mission-critical loads.
- 3 Programmable outlets: connect to non-critical loads
- 4 USB/RS-232 serial communication port
- 5 ROO/RPO function connector
- 6 SNMP intelligent slot
- 7 Dry contact
- 8 External battery connector

2-2. Setup the UPS

Step 1: UPS input connection

Plug the UPS into a two-pole, three-wire, grounded receptacle only. Avoid using extension cords. The power cord is attached to the UPS. The input plug is a NEMA 5-15P.

Step 2: UPS output connection

There are two kinds of output receptacles: programmable outlets and general outlet. Please

connect non-critical devices to the programmable outlets and critical devices to the general outlets. During power failure, you may extend the backup time to critical devices by setting shorter backup time for non-critical devices.

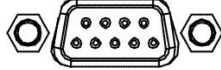
Step 3: Communication connection

Communication port:

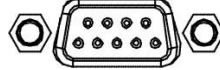
USB port



RS-232 port



Dry contact



Intelligent slot



To allow for unattended UPS shutdown/start-up and status monitoring, connect the communication cable one end to the USB/RS-232 port and the other to the communication port of your PC. With the monitoring software installed, you can schedule UPS shutdown/start-up and monitor UPS status through PC.

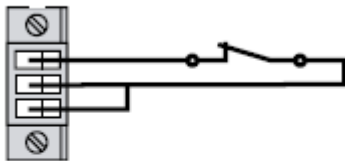
The pin assignment for dry contact is listed as below:

Condition	Pin status	
	Yes	No
Low battery.	Pin 3 and Pin 9 are connected.	Pin 3 and Pin 1 are connected.
Output is abnormal.	Pin 7 and Pin 8 are connected.	Pin 7 and Pin 5 are connected.
Battery mode.	Pin 2 and Pin 6 are connected.	Pin 2 and Pin 4 are connected.

The UPS is equipped with intelligent slot perfect for SNMP card. When installing with SNMP card in the UPS, it will provide advanced communication and monitoring options.

Step 4: Disable/Enable ROO/RPO function

ROO

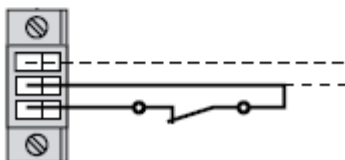


Contact open: UPS shuts down.

Contact closed: UPS start-up (UPS is connected to AC power and AC power is available).

Note: The local ON/OFF control by pressing On/Off button overrides the remote-control function.

RPO



Contact open: UPS shuts down and Fault LED (3) will be ON.

To return to normal operation, de-activate external remote contact (Fault LED (3) will be OFF) and restart the UPS by pressing button.

Step 5: Turn on/off the UPS

Press the ON/OFF button on the front panel for two seconds to power on the UPS.

Step 6: Install software

For optimal computer system protection, install UPS monitoring software to fully configure UPS shutdown. You may insert provided CD into CD-ROM to install the monitoring software. If not, please follow steps below to download and install monitoring software from the internet:

1. Go to the website **<http://www.power-software-download.com>**
2. Click ViewPower software icon and then choose your required OS to download the software.
3. Follow the on-screen instructions to install the software.
4. When your computer restarts, the monitoring software will appear as an orange plug icon located in the system tray, near the clock.

3. Operations

3-1. Button operation

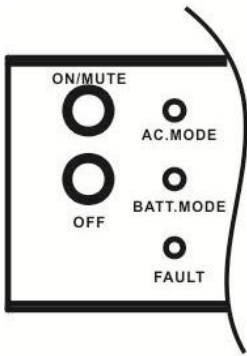
1K View:

LED indicators On/Off button



Button	Function
ON/OFF Button	<ul style="list-style-type: none"> Turn on the UPS: Press and hold button for at least 2 seconds to turn on the UPS. Turn off the UPS: Press and hold this button at least 2 seconds to turn off the UPS. UPS will be in standby mode when utility power is normal or transfer to bypass mode if bypass mode is enabled via software.

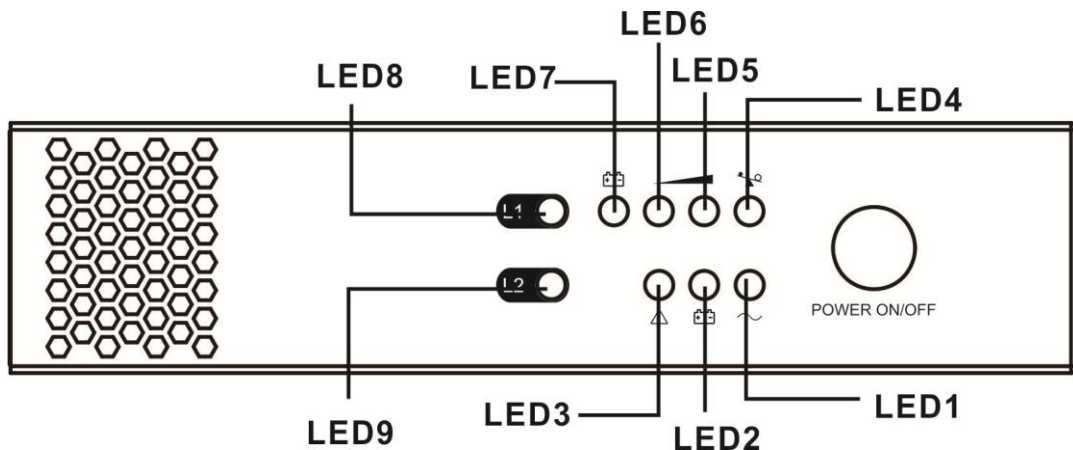
1KL View:



Button	Function
ON/Mute Button	<ul style="list-style-type: none"> Turn on the UPS: Press and hold ON/Mute button for at least 2 seconds to turn on the UPS. Mute the alarm: When the UPS is on battery mode, press and hold this button for at least 5 seconds to disable or enable the alarm system. But it's not applied to the situations when warnings or errors occur.
OFF/Enter Button	<ul style="list-style-type: none"> Turn off the UPS: Press and hold this button at least 2 seconds to turn off the UPS in battery mode. UPS will be in standby mode under power normal or transfer to Bypass mode if the Bypass enable setting by pressing this button.

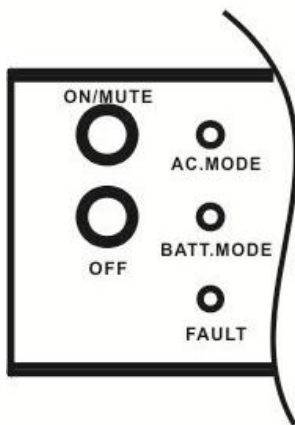
3-2. LED Indicators

1K View:



UPS Status	LED	Color	Lighting/Flashing
Line Mode	LED1	Green	Lighting
	LED4 to LED7 indicate load level during line mode. LED4: > 75% load level LED5: 50% ~ 75% load level LED6: 25% ~ 50% load level LED7: 0% ~25% load level	Green	Lighting
Battery Mode	LED2	Yellow	Flashing
	LED4 to LED7 indicate battery capacity during battery mode. LED4: battery voltage > 26V LED5: battery voltage > 24.5V LED6: battery voltage > 23V LED7: battery voltage > 21V	Green	Lighting
Low battery	LED7	Green	Flashing
Battery replacement	LED3	Red	Flashing
Fault	LED3	Red	Lighting
On/off status of output receptacles	LED 8: indicating on/off status of general output receptacles (Ⓐ) LED 9: indicating on/off status of programmable outlet (Ⓑ)	Green	Lighting

1KL View:



Three indicators to display UPS status:

UPS Status	Indicators
AC Mode	Green LED lighting.
Battery Mode	Yellow LED flashing.
Fault	Red LED lighting.
Off-mode charging.	Green LED flashing.

3-3. Audible Alarm

Battery Mode	Sounding every 4 seconds
Low Battery	Sounding every second
Overload	Sounding twice every second
Fault	Continuously sounding
Bypass Mode	Sounding every 10 seconds

4. Troubleshooting

If the UPS system does not operate correctly, please solve the problem by using the table below.

Symptom	Possible cause	Remedy
No indication and alarm even though the mains is normal.	The AC input power is not connected well.	Check if input power cord firmly connected to the mains.
	The AC input is connected to the UPS output.	Plug AC input power cord to AC input correctly.
The mains is normal but red LED is flashing. The alarm is sounding every second.	The internal or external battery connection is wrong.	Please re-connect battery wires with correct polarity.
The alarm is sounding twice every second and red LED is flashing.	UPS is overload	Remove excess loads from UPS output.
	After repetitive overloads, the UPS is locked in the Bypass mode. Connected devices are fed directly by the mains.	Remove excess loads from UPS output first. Then, shut down the UPS and restart it.
The mains is normal. But the unit is on battery mode.	Battery is not fully charged.	Please charge battery at least 5 hours. If battery is still in low battery level, please contact local dealer.
	Battery defect.	Replace the battery with the same type of battery.
Red LED is on and alarm is sounding continuously.	UPS fault.	Please contact local dealer directly.

5. Storage and Maintenance

Operation

The UPS system contains no user-serviceable parts. If the battery service life (3~5 years at 25°C ambient temperature) has been exceeded, the batteries must be replaced. In this case, please contact your dealer.



Be sure to deliver the spent battery to a recycling facility or ship it to your dealer in the replacement battery packing material.

Storage

Before storing, charge the UPS 5 hours. Store the UPS covered and upright in a cool, dry location. During storage, recharge the battery in accordance with the following table:

Model	Storage Temperature	Recharge Frequency	Charging Duration
1K	-25°C -50°C	Every 3 months	1-2 hours
	50°C -55°C	Every 2 months	1-2 hours
1KL	-25°C -40°C	Every 3 months	1-2 hours
	40°C -45°C	Every 2 months	1-2 hours

6. Specifications

MODEL		1K	1KL*
CAPACITY		1000 VA / 800 W	
INPUT			
Voltage Range	Low Line Transfer	80VAC/70VAC/60VAC/55VAC \pm 5 % or 160VAC/140VAC/120VAC/110VAC \pm 5 % (based on load percentage 100% -80 % / 80 % -70 % / 70 -60 % / 60 % -0)	
	Low Line Comeback	85VAC/75VAC/65VAC/60VAC \pm 5 % or 170VAC/150VAC/130VAC/120VAC \pm 5 % (based on load percentage 100% -80 % / 80 % -70 % / 70 -60 % / 60 % -0)	
	High Line Transfer	150 VAC \pm 5 % or 300 VAC \pm 5 %	
	High Line Comeback	140 VAC \pm 5 % or 290 VAC \pm 5 %	
Frequency Range		40Hz ~ 70 Hz	
Phase		Single phase with ground	
Power Factor		\geq 0.99 @ Nominal voltage (full load)	
OUTPUT			
Output voltage		110/120 VAC or 220/230/240 VAC	
AC Voltage Regulation		\pm 1%	
Frequency Range (Synchronized Range)		57 ~ 63 Hz or 47 ~ 53 Hz	
Frequency Range (Bat. Mode)		60Hz or 50 Hz \pm 0.3 Hz	
Overload		100%~105%: audible warning 105%-130%: UPS shuts down in 10 seconds at battery mode or transfers to bypass mode after 2min when the utility is normal. >130%: UPS shuts down immediately at battery mode or transfer to bypass mode after 10s when the utility is normal.	
Current Crest Ratio		5:1 for 110/120 VAC system or 3:1 for 220/230/240 VAC systems	
Harmonic Distortion		\leq 3 % THD (Linear Load) \leq 5 % THD (Non-linear Load)	
Transfer Time	AC Mode to Bat Mode	Zero	
	Inverter to Bypass	4 ms (Typical)	
Waveform (Bat Mode)		Pure Sinewave	
EFFICIENCY			
AC Mode		~ 86% @ 100% load	
Battery Mode		~ 83% @ 100% load	
BATTERY			
Battery Type	6 V / 9 AH	Lithium-iron battery or Sealed Lead-acid battery (Battery voltage: 48VDC)	
Numbers	4		
Recharge Time	9 hours recover to 90% capacity		
PHYSICAL			
Dimension, D X W X H (mm)	477 x 438 x 44	300 x 438 x 44	
Net Weight (kg)	12.6	6	
ENVIRONMENT			
Operation Humidity	20-90 % RH @ 0-50°C (non-condensing)	20-90 % RH @ 0-40°C (non-condensing)	
Noise Level	Less than 50dBA @ 1 Meter		
MANAGEMENT			
USB/RS-232	Supports Windows® 2000/2003/XP/Vista/2008/7/8, Linux and MAC		
Optional SNMP	Power management from SNMP manager and web browser		

*1KL is only available in 220/230/240VAC system.